

Wayne E. Moyer

Freelance Photojournalist

3261 Lantz Rd., Beaver Creek OH 45432-2543

Phone/Fax: (937) 426-9312 E-Mail: wmoyer@woh.rr.com

■ JANUARY 24, 2008

www.oldcarsweekly.com ■ 11

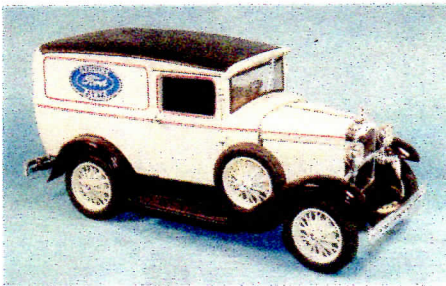
» NEW MODELS

By Wayne E. Moyer

Fine Ford

Signature's good-looking 1:18 1931 Ford Model A sedan delivery matches photos in the "Standard Catalog of Light Duty Trucks" very well and is especially attractive in its authentic "Ford parts" livery.

The glossy light gray-green paint on the die-cast body is set off by equally glossy black fenders, a realistic fabric-looking top and crisp hot-printed pinstripes and Ford logos.



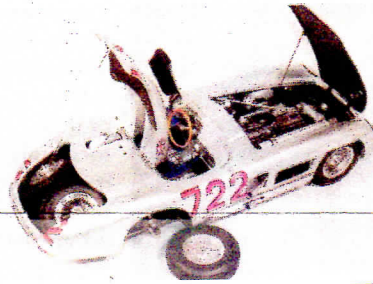
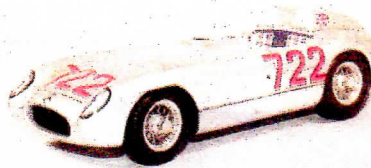
Under the double-hinged hood, the four-cylinder engine has neat relief-molded accessories, but no wiring. Interior details match photos, and there's a simulated wood floor and side panels in the rear compartment. Dimensions check out well, too.

DiecastAuto.com, at 866-648-1552 or www.DiecastAuto.com, has this Model A for \$28.99.

Museum-worthy Mercedes

CMC's new 1:18 Mercedes 300SLR is certainly the model of the year — this year or any other year! My first published story was about the 300SLR, I have dozens of references and all the models, and this one is by far the best one yet. With more than 1,500 parts, all assembled with exceptional craftsmanship, literally anything that can be seen in photos is included in this model with excellent scale fidelity.

The laid-over engine is a superb model



in itself. The cockpit is upholstered in real leather and fabric. The trunk has all the fuel lines and pumps under the two removable spare tires. Mercedes made many changes to the 300SLR in its museum, but CMC has modeled the car exactly as it won the 1955 Mille Miglia.

This museum-quality masterpiece is \$269; contact CMC-USA at cmc.usa@hotmail.com or 585-292-7280 for more information.