

Wayne E. Moyer

Freelance Photojournalist

3261 Lantz Rd., Beavercreek OH 45432-2543

Phone/Fax: (937) 426-9312 E-Mail: wmoyer@woh.rr.com



OLD CARS

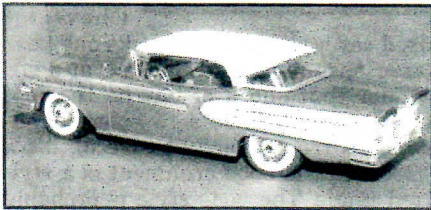
October 19, 2006

9

NEW TOYS & MODELS

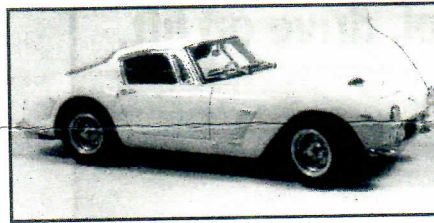
New Toys & Models introduces new miniatures of vintage cars and trucks. These are available from hobby dealers or through ads in Old Cars Weekly.

Elegant Edsel



The latest white-metal model from Mini-Marque is this beautiful 1958 Edsel Citation four-door hardtop. Only 50 serial-numbered copies were made in each of four authentic two-tone paint schemes; this sample's super-smooth, high-gloss Copper Metallic and Frost White colors match paint chips perfectly. The model has a combination of separate chrome-plated parts, relief-cast moldings scraped to bare metal and small decal badges — not a photo-etched piece to be seen. The two-tone upholstery patterns are correct, as is the dash, with decaled instrument faces, separate plated handles and painted cranks and dash details. Workmanship on this hand-built model is first class throughout. The car is accurately proportioned to 1/41st scale. Dominion Models offers this '58 Edsel Citation for \$205 (post-paid) at 540-375-3750 or www.dominionmodels.com. — Wayne E. Moyer

Ferrari for the fickle



If you missed the first release of CMC's museum-piece 1961 Ferrari 250GT Berlinetta *Lusso* (short wheel-base), or simply want one that's a little different, this superb miniature is now available in *Giallo Modena* (Ferrari Yellow). The hand-rubbed yellow paint and the fit of all 1,140 parts are simply flawless, but the lasting impression of this model is its scale fidelity. From the detailed V-12 engine, which features accurate parts down to real metal hose clamps on coolant lines, to the removable spare in the carpeted trunk, everything visible in photos can be seen in the model! The interior is upholstered in real leather, too. If you want the very best 1/18th-scale model available, CMC's superb Ferrari 250GT SWB is about \$245. Contact CMC-USA at 585-292-7280 for more information. — Wayne E. Moyer