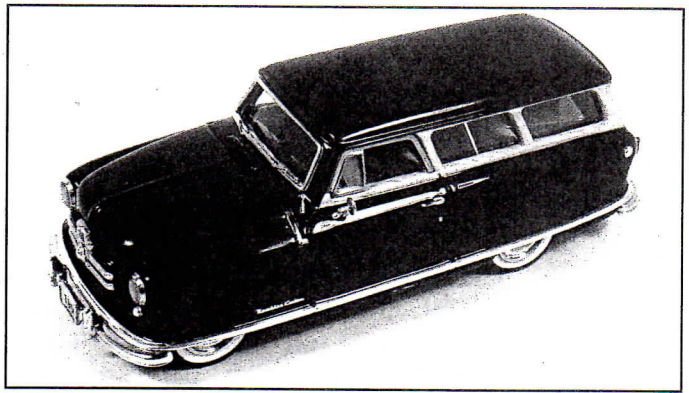
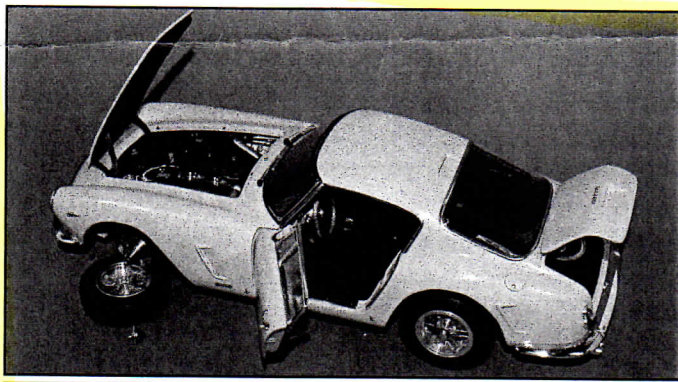


**Motor City USA's Nifty Fifty Nash Rambler Wagon**  
 Motor City USA's new *fully* finished Gold series 1950 Nash Rambler Station Wagon differs only in having an excellent, highly detailed resin body. Its gorgeous, mirror-smooth metallic burgundy paint is set off by perfectly reproduced "Di-Noc" wood-grain trim. The lower body trim is plated with chrome foil, script badges are chrome print on clear film, and everything else, including window moldings and cabin air scoops, is done with separate chrome pieces. Interior detail separates this model from the rest; separate chrome handles, legible instrument faces, and fully detailed suitcases resting on chrome rub rails in the rear. They've gotten the body shape, with the wide nose required for the skirted front wheels, exactly right, too. Sinclair's (MiniAuto.com) has the new Motor City USA Gold Nash Wagon.



#### UNDER THE HOOD

- |                                |   |
|--------------------------------|---|
| ■ <b>Realism/Scale</b> ✓✓✓✓    | ■ <b>BUT...</b> No butts, it's beautiful! |
| ■ <b>Detailing</b> ✓✓✓✓        | <b>Price: \$99.95</b>                     |
| ■ <b>Working Features</b> ✓    | MiniAuto.com                              |
| ■ <b>Paint and Finish</b> ✓✓✓✓ |   |



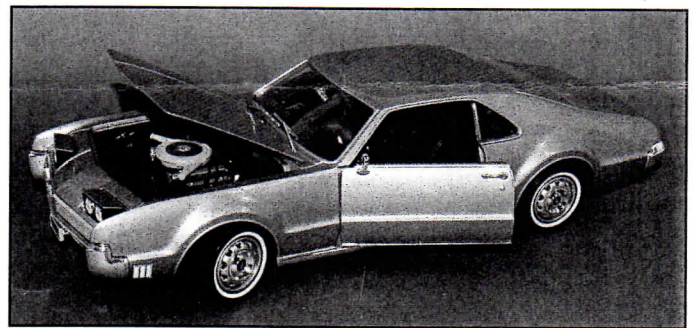
#### UNDER THE HOOD

- |                                |  |
|--------------------------------|--|
| ■ <b>Realism/Scale</b> ✓✓✓✓    | ■ <b>BUT...</b> Perfection in 1/18 scale |
| ■ <b>Detailing</b> ✓✓✓✓        | <b>Price: \$245</b>                      |
| ■ <b>Working Features</b> ✓✓✓✓ | usa@mc@msn.com                           |
| ■ <b>Paint and Finish</b> ✓✓✓✓ |  |

**Déjà vu in Yellow: CMC's Ferrari 250GT SWB**  
 Tired of red Ferraris? CMC's fantastic 250GT SWB (see MC 111) is now available in Giallo Modena or Ferrari Yellow. The hand-rubbed yellow paint and fit/finish of all 1140 parts are as perfect as always, and I'll highlight some details I couldn't fit in the first review. Each spoke in the scale Borrani wheels is separate, and the knock-offs can be removed to dismount the wheels and check out the miniature disk brakes. The functional rear springs are made up from individual leaves and the shocks telescope when the wheels are depressed. Fuel lines, hydraulic lines, shift linkage to the transaxle, and many other details are there, and in scale; the drive-shaft is held to the transaxle by tiny bolts, too! You've just gotta see this one; call CMC-USA (Ph: 585.292.7280) for more information.

#### Yat Ming's Terrific Toronado

Oldsmobile's Toronado was the spiritual descendant of the classic Cords, and when it was introduced in 1966 it was easily the most unique American car. Yat Ming's new 1/18 scale '66 Toronado is a bargain-priced beauty: the complex body shape has been modeled very accurately and it's fully detailed; even the 1966-only eyebrows above the pop-up headlights are correct. GM offered three shades of gold paint in '66 and the glossy finish is very close to my Sierra Mist chips, with just a little orange peel. Spark plug wires are too thick, but they're there and the accessories and smaller details match photos nicely. The accurate interior features lots of chrome trim and legible instrument faces. DiecastAuto.com has the full Yat Ming line.



#### UNDER THE HOOD

- |                                |   |
|--------------------------------|---|
| ■ <b>Realism/Scale</b> ✓✓✓✓    | ■ <b>BUT...</b> Chassis detail is limited |
| ■ <b>Detailing</b> ✓✓✓         | <b>Price: \$24.99</b>                     |
| ■ <b>Working Features</b> ✓✓✓  | DiecastAuto.com                           |
| ■ <b>Paint and Finish</b> ✓✓✓✓ |   |