

# Small Scales

BY DAVID LaCHANCE

## 1955 Mercedes-Benz 300 SLR Uhlenhaut Coupé

CMC Classical Model Cars

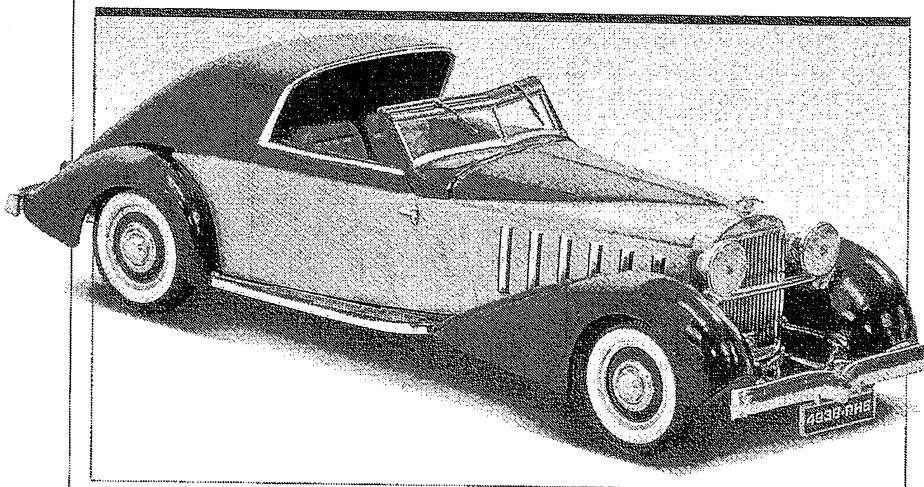
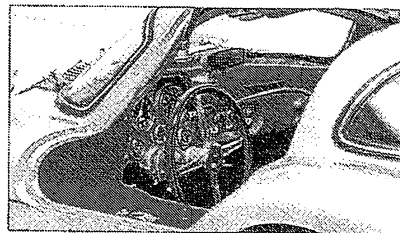
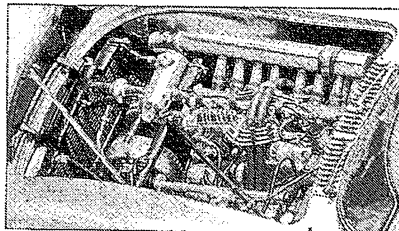
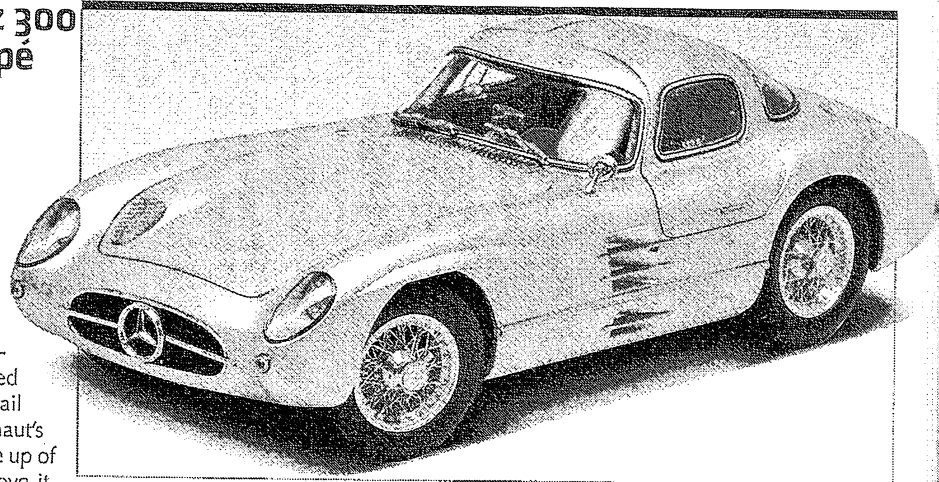
1/18 scale

\$282.50

[www.cmc-modelcars.de](http://www.cmc-modelcars.de)

★★★★

Lucky Rudolf Uhlenhaut. When Mercedes-Benz pulled out of racing in late 1955, the engineer got to use the only two 300 SLR Coupes built as his daily drivers. If you've seen any of CMC's previous offerings, you won't be surprised by the incredible attention to detail displayed in their replica of Uhlenhaut's car. CMC says that the model is made up of 1,817 individual parts, and we believe it. Both doors open on correct-scale hinges, as do the hood and the trunk. The interior is swathed in red leather and plaid upholstery, and crammed with detail. The straight-eight engine, with its fuel-injection plumbing, is nothing less than a masterpiece. It's not inexpensive, but if you add one of these to your collection, you'll never wonder where CMC spent the money.



## 1934 Hispano-Suiza J12 Coupe de Ville

IXO Models

1/43 scale

\$29.99

[www.replicarz.com](http://www.replicarz.com)

★★★★

In 1934, Anthony Gustav de Rothschild ordered himself a pair of Hispano-Suizas with custom coachwork by Fernandez & Darrin. One was a coupé chauffeur, and the other a four-passenger coupé. It's the latter car that IXO has chosen to reproduce in its Museum Collection line, and it's a gem. The shape is very good, and the paint is beautifully glossy. IXO has included a complete interior, done in the correct dark blue. We had some quibbles: One headlamp lens was crooked, the instrument panel should be chromed rather than black, and the stork mascot looks a little like a winged dolphin. At this scale, there are no opening panels, but a clear display case is included. This is a pleasing replica of a stunning Classic, and would look great on any shelf.

